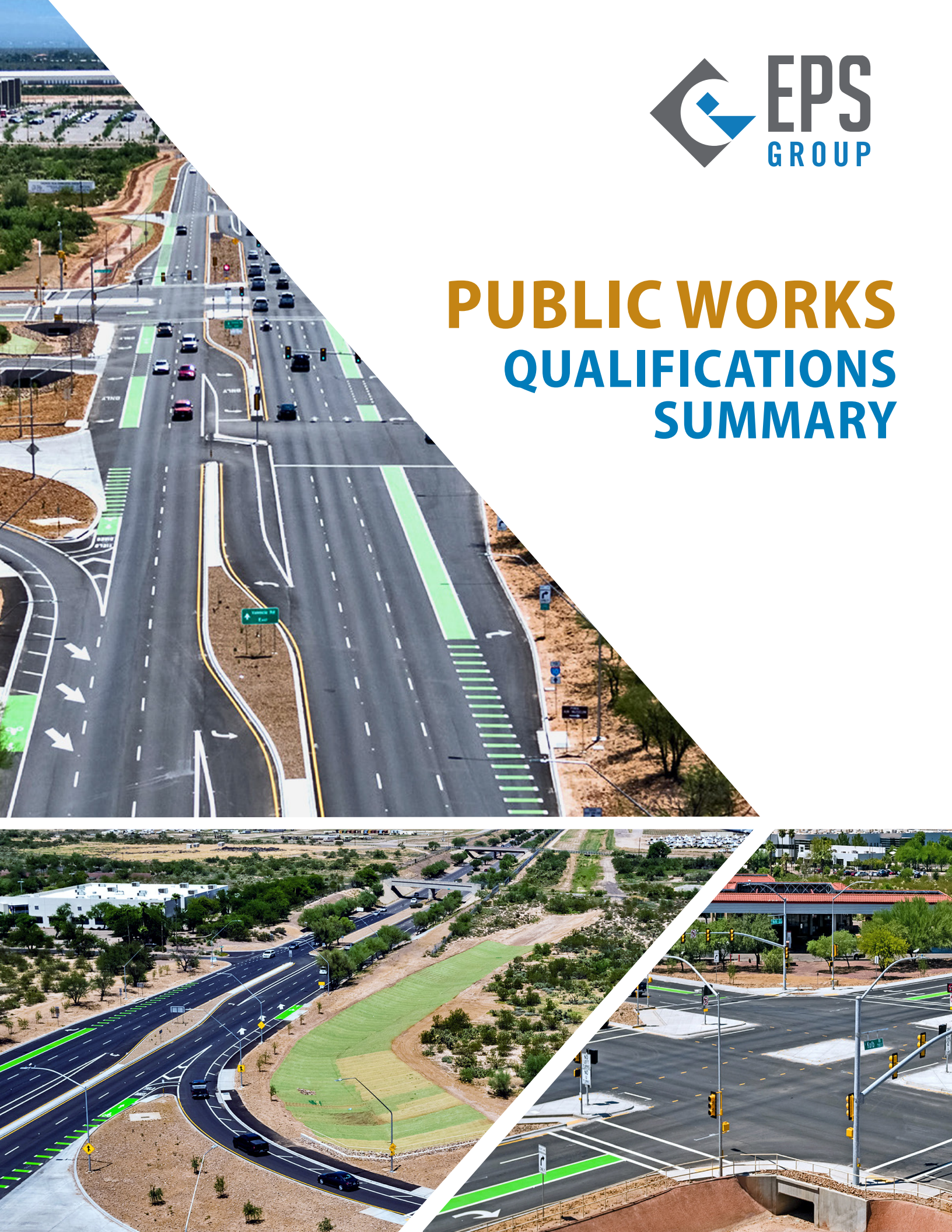




# PUBLIC WORKS QUALIFICATIONS SUMMARY





## LET'S ELEVATE *Southern Arizona Together*

At EPS Group, we are your dedicated engineering partner, committed to elevating Arizona's public works departments. With a legacy of excellence since 2003, we have become a trusted industry leader, known for our unwavering dedication to improving the communities we serve. Our team of over 300 talented professionals excels in multi-disciplinary land and infrastructure development, making us a reliable choice for public works projects that demand the highest standards of quality and efficiency. When you choose EPS Group, you gain access to a large-scale firm with a people-first approach, ensuring that your public works initiatives thrive and flourish.

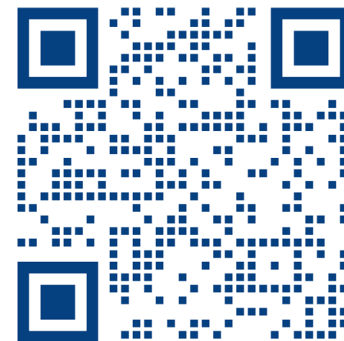
EPS Group takes pride in offering Arizona's public works professionals an integrated and efficient solution for their complex projects. Our Arizona-based team understands the unique intricacies of working within the state's rapidly growing counties and municipalities. We bring clarity to even the most challenging endeavors. For public agency clients across Arizona, this translates into meeting deadlines, managing budgets, and achieving project success that fills us all with pride. Together, **LET'S ELEVATE *Southern Arizona Together*** as we continue to make a lasting impact on the state's public works landscape.

If you're a public service professional, we salute you. No public agency is immune to aging infrastructure, rising costs, or limited resources. As your engineering partner, we are always looking for ways to make your life easier and to help you do more with less. We offer efficiency in the form of a multi-discipline, fully integrated, Arizona-based team that understands the nuances of working within our fast-growing local counties and municipalities.

### OUR EXPERTISE

- Traffic Solutions
- Transportation Infrastructure
- Water/Wastewater
- Flood Control/Mitigation
- GIS
- Utility Coordination

Connect with an engineer today!



# PROJECT EXPERIENCE



## PIMA COUNTY – TANQUE VERDE AND TANQUE VERDE LOOP INTERSECTION TUCSON, ARIZONA

- Intersection faced heavy traffic volumes and high delays.
- Guided and developed the project through the project assessment process following ADOT LPA guidelines, demonstrating successful collaboration with Pima County on a smaller federally funded project within budget.
- The team worked through the traffic analysis, finding that both the t-intersection or a standard 4-leg intersection would perform very comparably to the initially proposed concept (Florida T-intersection).
- County moved forward with a widen and overlay option, reducing construction costs without a significant loss in service life.



## CITY OF TUCSON – VALENCIA/KOLB TO HOUGHTON INTERSECTION IMPROVEMENTS TUCSON, ARIZONA

- EPS Group, in partnership with clients and partners collaborated with the City of Tucson to enhance Valencia Road transportation infrastructure.
- The project involved widening a 3.7-mile stretch of Valencia Road from Kolb Road to Houghton Road, incorporating pedestrian and bicycle accommodations, upgraded intersections, and sustainable design elements.
- This collaborative effort aimed to improve traffic flow, safety, and overall road quality for the Tucson community.



## CITY OF SIERRA VISTA – FRY BOULEVARD, ROAD AND STREETSCAPE IMPROVEMENTS SIERRA VISTA, ARIZONA

- Designed roadway and streetscape improvements for Fry Boulevard corridor in Sierra Vista’s revitalization initiative to activate multi-modal transportation.
- Project scope involved public participation elements, utility coordination, surveying, and right-of-way mapping.
- Assisted City staff in preparing the bid package and bid analysis.
- Successfully selected a contractor for the improvement project.
- Providing oversight for the construction of roadway and streetscape improvements.

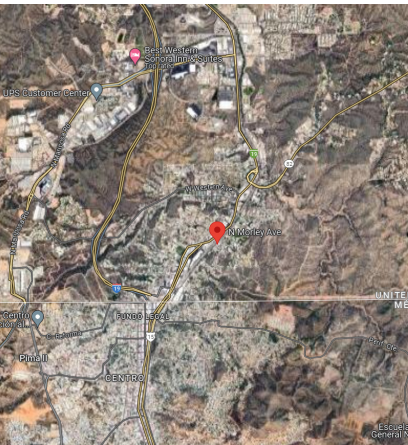
# PROJECT EXPERIENCE



## TOWN OF MARANA – CAMINO MARTIN/ JEREMY PLACE ROAD IMPROVEMENTS

### MARANA, ARIZONA

- EPS Group stepped in to tackle drainage and pavement issues head-on with the help of our partners.
- Our team's expertise in drainage analysis, roadway design, and project management led to a successful solution that not only eliminated flooding but also improved the overall road condition.
- We're proud to have partnered with the Town of Marana to deliver a long-lasting improvement to the community.



## CITY OF NOGALES – MULTI-USE PATHWAY ALONG PATAGONIA HIGHWAY

### NOGALES, ARIZONA

- EPS Group recently wrapped up the design of 1.2 kilometers of pedestrian improvements along SR82 in the City of Nogales.
- This federally financed project will improve safety for students and communities by repairing old infrastructure and correcting sidewalk gaps near Lordes Catholic School.
- Surveying, civil design, and assistance with environmental, utility, and right-of-way clearances are among the services offered.

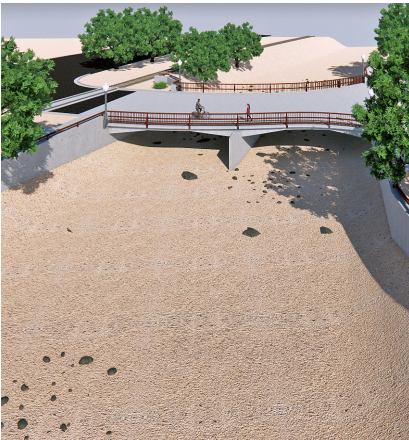


## CITY OF TUCSON – NARANJA DRIVE MULTI-USE PATH

### TUCSON, ARIZONA

- EPS Group partnered with the Arizona Department of Transportation (ADOT) to begin construction on a 2-mile multi-use path along Naranja Drive.
- This path will connect residents to Naranja Park and other local amenities.
- The project also includes drainage and erosion control measures.

# PROJECT EXPERIENCE



## CITY OF GLOBE – PINAL CREEK BRIDGE AND ROAD REPLACEMENT

### GLOBE, ARIZONA

- Relocated a bridge over Pinal Creek, replacing an aging structure.
- Reconfigured local streets to accommodate the new bridge location, shifting it 300 feet upstream.
- Created a new at-grade crossing of the Arizona Eastern Railway (AZER) with pedestrian-friendly gate arms.
- Conducted analysis of the Pinal Creek watershed to provide mitigation for FEMA floodway impacts.
- Coordinated with stakeholders including the City and AZER right-of-way considerations, along with utility providers, and residents.
- Emphasized driver safety, addressing issues like confusing old intersection geometries.



## CITY OF MARICOPA – EAST-WEST CORRIDOR (SONORAN DESERT PARKWAY, PHASE 1): SR 347 TO PORTER ROAD

### MARICOPA, ARIZONA

- Completed design for Arizona Parkway along the East-West Corridor in Pinal County.
- Project includes the westernmost two miles of the Corridor and a half-mile stretch of Porter Road with a new bridge over the Santa Rosa Wash.
- Involved extensive coordination with adjacent development projects to ensure necessary accesses and utility infrastructure.
- Providing oversight for the construction of roadway and streetscape improvements.



## VALLEY METRO / CITY OF MESA – GILBERT ROAD LIGHT RAIL EXTENSION

### MESA, ARIZONA

- Civil engineering and survey consulting for a 1.75-mile Main Street extension in downtown Mesa.
- Project involved roadway design, bus pull-outs, drainage design, utility coordination, surveys, right-of-way plans.
- Generated over 200 legal descriptions/exhibits.
- Value Engineering Workshop led to EPS Group's recommendation to relocate the Gilbert Road station, resulting in a \$1.5 million cost savings.

# MEET OUR PUBLIC WORKS TEAM



**Greg Froehlich, PE**  
*Public Works Department Manager*

Greg is a highly experienced project manager with 27 years in civil engineering. He specializes in delivering projects on time for various clients, including municipalities, tribes, counties, and states. His expertise covers roadway and intersection design, storm drain systems, hydrology, cost estimation, and construction inspection. Greg is known for his attention to detail, adherence to schedules, and ability to provide cost-effective and timely solutions that meet client needs.



**Matt Truitt, PE**  
*Senior Project Manager*

Matt has served as project manager for numerous transportation projects over the past 18 years. His experience includes roadway, site infrastructure, and drainage designs. He also has completed transportation studies and roadway designs under multiple on-call contracts for the Maricopa County Department of Transportation and the Arizona Department of Transportation.



**Anthony Herrera, PE**  
*Project Manager*

Anthony is a seasoned roadway engineer with 25 years of experience. He has worked on diverse public works projects and is known for his versatility. As the lead roadway engineer for this contract, he will also oversee utility design and coordination. Anthony has a proven track record of resolving utility conflicts and finding efficient solutions to minimize disruptions during roadway construction.



**James Beier, PE, PTOE, RSPI**  
*Project Manager*

James is a skilled transportation engineer with 19 years of experience. He specializes in roadway design for Arizona agencies, particularly in Tucson. James is well-versed in Tucson's guidelines and standards for road design, access control, signalization, and mobility. His expertise is recognized with the Level 1 Road Safety Professional (RSP1) certification, which demonstrates his knowledge of road safety principles across various fields.



**Jeff Stine, PE**  
*Senior Project Manager*

Jeff is a seasoned project manager and principal civil engineer with 18 years of experience at EPS Group. He has successfully completed over 200 projects, specializing in smaller, multi-disciplinary projects. As the lead for the Willcox project, Jeff will guide the development process to ensure the project improvements meet the city's expectations.



**Bryan Martin, PE, PTOE**  
*Senior Project Engineer (PE-3)*

Bryan began working at EPS Group upon graduating from Arizona State University in 2010. His experience in Traffic Engineering includes a variety of traffic impact studies, parking studies, plan preparation, and roadway design projects. His work on past projects have helped him develop design and technical skills, as well as proficiency with AutoCAD, MicroStation and InRoads.